



# TAN CANG OFFSHORE SERVICES JSC.

## Vessel Specification



# TC ROYAL

## Technical Specification

Platform Supply Vessel  
6,000 HP  
DP2

*“Our success is driven by the customers”*

### MAIN PARTICULARS

#### GENERAL

Flag	Vietnam
Year Delivered	2013
Hull no	487 F
Builder	Xiamen Shipbuilding Industry Co. Ltd.
Designer	Kiam Chuan Marine Pte.Ltd.
Classification	American Bureau Of Shipping/VR
Notation	ABS, + A1, FFV1, OSR-C1, Offshore Support Vessel, SPS, Supply-HNLS, E, +AMS, + ACCU +DPS-2

#### ACCOMODATION

1 Man Cabin x 6	15
2 Men Cabin x 22	44
Total person on Board	59
Hospital room	1 Bed
Fully air-conditioned	

#### PRINCIPAL DIMENSIONS

LOA	75.00 m
Breadth moulded	8.00 m
Depth moulded	07.00 m
Summer Draft	6.60 m

#### ANCHOR MOORING SYSTEM

Anchor Type	High Holding Power Anchor
Anchor Capacity	2 x 1980 kg
Anchor Chains	17 Shackles L, 46 mm Dia, U2 Gr

#### PROPULSION PERFORMANCE

Maximum Speed	13.5 Knots (approx.) @ 100% MCR
Economic Speed	12.6 Knots (approx.) @ 75% MCR

#### ELECTRIC POWER GENERATION

Main Generators	3 x 450 kW@415V/3Ph/50Hz
Emergency Generators	1 x 80 kW@415V/3Ph/50HZ
Shaft Alternators	2 x 1000 kW@415V/3Ph/50HZ

#### DYNAMIC POSITIONING SYSTEM

DP-2 System	1 set
Maker	Kongsberg

#### CARGO DECK/ TONNAGE

GRT/NRT	2955 / 908
Dead weight	3262 MT (Approx..)
Free Deck Space	700 m2
Deck Strength	5.5 T/m2

#### DISCHARGE CAPACITY

Fuel Oil	2 x 150 m3/hr @ 80 m head;
Fresh water	1 x 150 m3/hr @ 85 m head;
Drill water/ SWB	1 x 150 m3/hr @ 80 m head;
Liquid Mud/ Brine	2 x 75 m3/hr @ 90 m head;
Methanol/ Base Oil	1 x 70 m3/hr @ 70 m head;

#### SAFETY EQUIPMENT

Life Raft	6 x 25 men
Rescue Boat	1 x 6 men c/w pivoting davit
Scrambling Net	2 set

Remarks: Vessel's Life Saving Equipment are in accordance with SOLAS/ FFS Code & Flag State Requirements

Technical parameters are subject to change without notice

TAN CANG OFFSHORE SERVICES JSC.

Contact:  
commercial@tco.com.vn  
www.tancangoffshore.com

# TAN CANG OFFSHORE SERVICES JSC.

## MACHINERIES

### DECK EQUIPMENT

Anchor Windlass and Mooring Winch	Electro Hydraulic System, Windlass with 13 Tons Duty Pull @ 15m/min
Tugger Winch	2 x 10 Tons @ Electro, Hyd. Sys
Capstan	2 x 10 Tons @ Electro, Hyd. Sys
Deck Crane	1 x 3 T (SWL) @ 10m outreach fixed-boom
Reefer Point	1 x 63A, 415V/3Ph/50Hz
	5 x 32A, 415V/3Ph/50Hz
	2 x 32A, 220V/1Ph/50Hz

### OTHER EQUIPMENT CAPACITIES

Air Compressor for Bulk Sys.	2 x 1500 m3/h @ 6bar
Air Dryer for Bulk Sys.	2 x 1800 m3/h @7bar
Oily Water Separator	1 x 1 m3/hr
Sewage Treatment	1 unit, suitable for 50 men
Fresh Water Maker	2 x 10 T/ day

### PROPULSION SYSTEM

Main Engine (Niigata)	2 x 3000 BHP, Diesel engine @ 750 rpm c/w Reduction gearbox
Propeller	2 x FPP, 2.7 m Dia @ 4-bladed, 360' azimuth wuth Kort Nozzle
Bow Thruster	2 x 10 T, CPP (650 kW E. Motor)

### ELECTRIC POWER GENERATION

Main Generators	3 x 450 kW@415/3Ph/50Hz
Emergency Generators	1 x 80 kW@415V/3Ph/50HZ
Shaft Alternators	2 x 1000 kW@415V/3Ph/50HZ

### NAVIGATION AND RADIO EQUIPMENT

GPS	1 unit
-----	--------

Gyrocompass	3 units
Magnetic Compass	1 unit
Radar (ARPA)	2 units ( 1 x X-Band, 1 x S-Band)
AIS	1 unit
Echo Sounder	1 unit
Speed log	1 unit
Anemometer	3 units
BNWAS	1 set
Autopilot	1 unit
CCTV	1 set
Search Light	3 units
GMDSS Radio A3	1 complete set
Navtex Receiver	1 unit
Fleet Broadband	1 set
VSAT	1 set
Interior Com System	1 set
PA system	1 set
Sound Power Phone	1 set

### FIRE FIGHTING & ANTIPOLLUTION EQUIPMENT

FiFi Classification	FFV1
Fire Pump Capacity	2 x 1,815 m3/hr @13 bar
Fire Monitor Capacity	2 x monitor capacity of 1200 m3/h water, 300 m3/h foam
Oil Dispersant System	2 x 12m Outreach Veejet Nozzle

Remarks: 1 x Fixed Fire-Fighting System (CO2) and 1 x Fixed Local Application System (Water Mist) to Machinery Space of Cat A, Fire Detection and Alarm System and Fire Fighting Equipment are in accordance with SOLAS/ FFS Code & Flag State Requirements.

### DRILL WATER/ WATER BALLAST TANKS

DW / WB FP (C)	93.4 m3
No.1 DW / WB DB (C)	83.4 m3
No.2 DW / WB WG (P)	55.7 m3
No.2 DW / WB WG (S)	27.6 m3
No.3 DW / WB DB (C)	114.5 m3
No.4 DW / WB WG (P)	72.8 m3
No.4 DW / WB WG (S)	72.8 m3
No.5 DW / WB DB (C)	135.6 m3
No.6 DW / WB WG (P)	65.9 m3
No.6 DW / WB WG (S)	65.9 m3
No.7 DW / WB DB (C)	176.5 m3
No.8 DW / WB WG (P)	113.3 m3
No.8 DW / WB WG (S)	113.3 m3
No.10 DW / WB WG (P)	73.6 m3
No.10 DW / WB WG (S)	73.6 m3
DW / WB AP (P)	41.1 m3
DW / WB AP (S)	41.1 m3
DW / WB AP (C)	80 m3
TOTAL	1500.1 m3

### CEMENT TANKS

Cement tanks	3 x 59.5 + 1 x 49.5
TOTAL	1500.1 m3

### MUD BRINE/ RO TANKS

No.1 Mud/ Brine/ RO (P)	142.4 m3
No.1 Mud/ Brine/ RO (S)	142.4 m3
No.2 Mud/ Brine/ RO (P)	127.6 m3
No.2 Mud/ Brine/ RO (S)	127.6 m3
No.3 Mud/ Brine/ RO (P)	99.7 m3
No.3 Mud/ Brine/ RO (S)	99.7 m3
TOTAL	739.4 m3

### BASE OIL/ METHANOL/ FO TANKS

BO/METHANO/ FO (C)	148.2 m3
TOTAL	148.2 m3

### OTHER TANKS

Foam (P)	12.7 m3
Detergent (S)	12.7 m3
HYD. Oil (P)	7 m3
LUB. Oil(P)	12.9 m3
Dirty Oil (P)	16.4 m3
Bilge Holding (S)	16.4 m3
Sewage Holding (S)	28.1 m3
EGEN FO DAY	0.55 m3
TOTAL	112.65 m3

### FRESH WATER

No.1 FW WG (P)	59.7 m3
No.1 FW WG (S)	59.7 m3
No.2 FW WG (P)	134.6 m3
No.2 FW WG (S)	134.6 m3
No.3 FW WG (C)	65.9 m3
No.4 FW WG (S)	46 m3
No.4 FW WG (P)	46 m3
TOTAL	546.5 m3

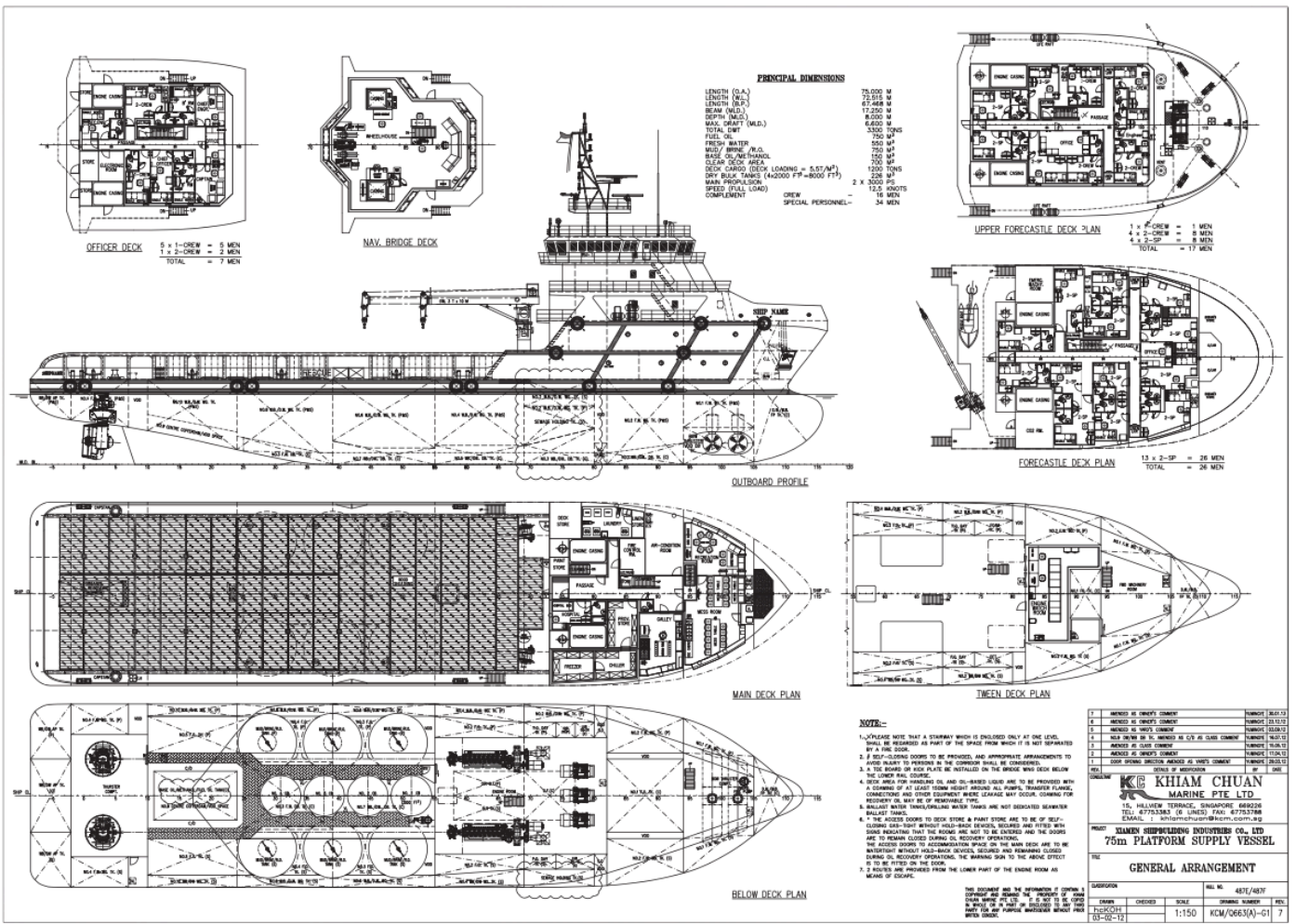
### FUEL OIL TANKS

FO DAY (P)	24.3 m3
FO DAY (S)	24.3 m3
No.1 FO (C)	171.7 m3
No.2 FO (P)	86.8 m3
No.2 FO (S)	86.8 m3
No.3 FO (P)	36.9 m3
No.3 FO (S)	36.9 m3
No.4 FO (P)	29.2 m3
No.4 FO (S)	29.2 m3
No.5 FO (P)	112.5 m3
No.5 FO (S)	112.5 m3
Over Flow (C)	23.3 m3
TOTAL	1500.1 m3

Technical parameters are subject to change without notice

# TAN CANG OFFSHORE SERVICES JSC.

## GENERAL ARRANGEMENT



Technical parameters are subject to change without notice

TAN CANG OFFSHORE SERVICES JSC.

Contact:  
[commercial@tco.com.vn](mailto:commercial@tco.com.vn)  
[www.tancangoffshore.com](http://www.tancangoffshore.com)