



# TAN CANG OFFSHORE SERVICES JSC.

## Vessel Specification



# TANCANG 62

## Technical Specification

Z-Drive Tug Vessel: 4,000 HP  
 Bollard Pull: 58 T  
 FiFi 1/2

*“Our success is driven by the customers”*



### MAIN PARTICULARS

#### GENERAL

Year Built	2015.
Home Port	Saigon.
Class	BV/VR
Notation	BV Class of I + Hull+ Mach Tug. VRH Tug/VHM.
Flag	Vietnam.
Official No	VNSG-2234-TK.
IMO No	9738648.
Call Sign	3WOD9.

#### PRINCIPAL DIMENSIONS

Length Overall	32.0 m.	Maximum Speed	Up to 12.0 knots.
Breadth Moulded	11.5 m.	Economical Speed	TBA.
Depth Moulded	5.30 m.	Bollard Pull (A H E A D)	Up to 58.0 tones.
Draft (max)	3.85 m.	Bollard Pull (S T E R N)	Up to 58.0 tones.

#### PERFORMANCE

#### ACCOMODATION

Total	12 Berths		
Air Condition/Heating	Fully air condition for 12 Berths		

Technical parameters are subject to change without notice

TAN CANG OFFSHORE SERVICES JSC.

Contact:  
[commercial@tco.com.vn](mailto:commercial@tco.com.vn)  
[www.tancangoffshore.com](http://www.tancangoffshore.com)

# TAN CANG OFFSHORE SERVICES JSC.

## MACHINERIES

### ➔ PROPULSION SYSTEM

Main Engines	2 x Niigata 6L26HLX
	2 x 2000 BHP (1471 KW) at 750rpm.
Z-Propeller	2 x Niigata ZP 31 c/w fixed pitch propellers.
Generator	2 x Volvo Penta 96 Kw at 1500rpm.
Oily Water Separator	Boss, 2.2T/107, 15ppm,0.5m3/hr.
Sewage Treatment Plant	Taiko KiKai SBH-15

### ➔ FIFI

External Fire Fighting	External ½ FiFi with 1 x 1400 m3/hr @ 140MWC pump (M.E FPTO) with 1 x 1200 m3 / hr monitors
	Total 1200m3/hr

### ➔ COMMUNICATION AND NAVIGATION

Anchor Windlass	Double gypsies, double warping ends of 330mm dia and centre rope drum
	Capacity as per class requirement
	Speed 12m/min
	Weight of anchor 600kg
Aft Towing Winch	High Hilding Power Dia of chain cable 24mm dia. U2 Type
	Capacity 10T x 10m/min 1 <sup>st</sup> layer, 1T x 50m/min 1 <sup>st</sup> layer
	Hawser used 45mm dia SWR x 750m length Braking holdin 125 tons static (1 <sup>st</sup> layer)
Chain cable	550m x 24mm dia
Stern Roller	2000mm x 600mm dia.
SOLAS Rescue Boat & DaVit	1 shipset.

### ➔ DECK - TOWING EQUIPMENT

Radar	Furuno FR8062 Furuno FAR2117
VHF	Furuno FM8900S
Echo Sounder	Furuno FE-700
GPS	Furuno GP-150
Autopilot	Anschutz Nautopilot NP60
VHF Base System	ICOM IC-M304
Magnetic Compass	Lilley & Gillie Mk 2000
PA System	Vingtor
NAVTEX	Furuno NX-700B
EPIRB	McMurdo E5
2-way VHF	ICOM IC-GM 1600
SART	McMurdo S4
AIS	Furuno FA150
BNWAS	Marble
Doppler Speed Log	Furuno DS-80
Immarsat "C"	Furuno Felcom-18
Anemometer	Raymarine ST-60
Satellite Compass	Furuno SC 50
MF/HF SSB Radio	Furuno FS 1575
SBS MF/HF	1 x Furuno FS 1575
SSAS	1xFuruno Felcom 18 intergrated in Sat-C
LRIT	1xFuruno Felcom 18 intergrated in Sat-C
GMDSS	Type: A1+A2+A3

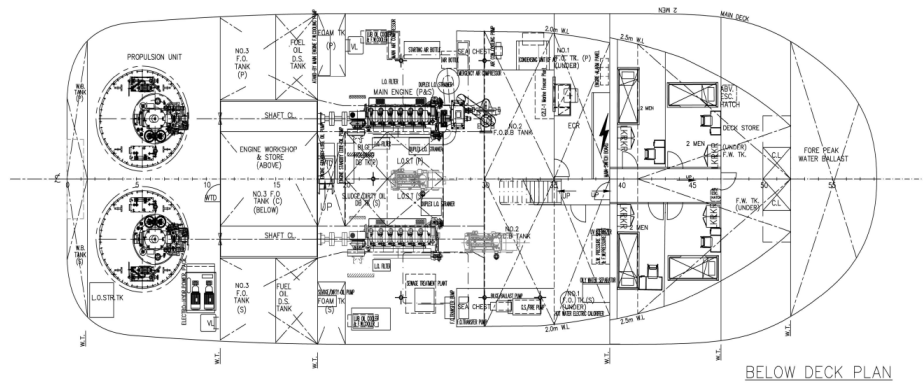
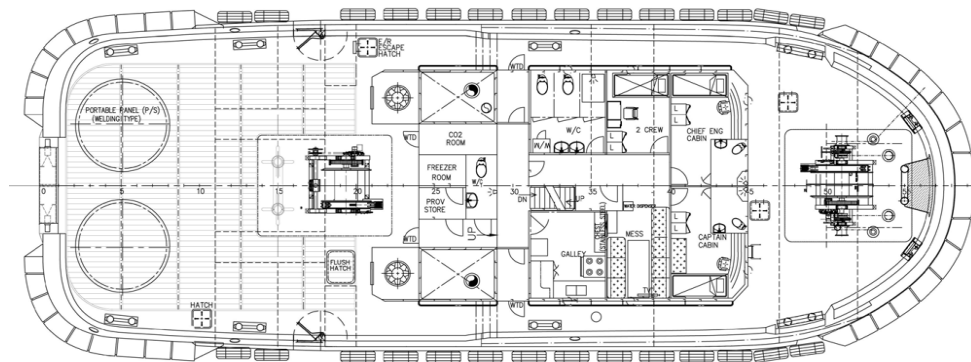
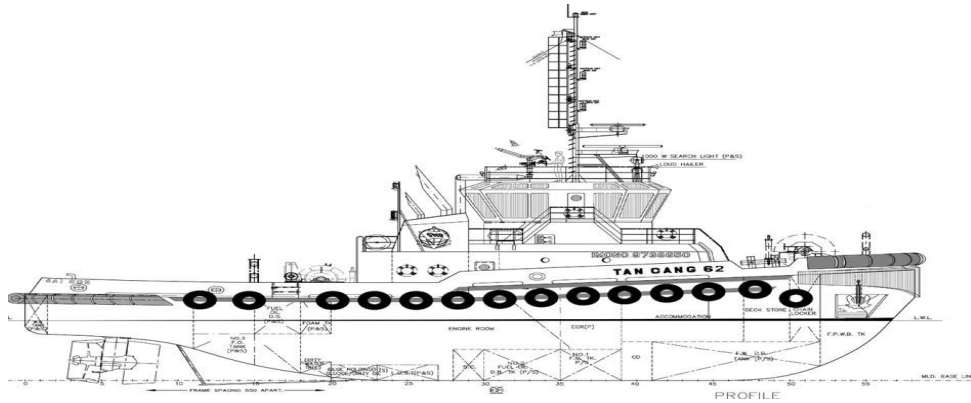
Technical parameters are subject to change without notice

TAN CANG OFFSHORE SERVICES JSC.

Contact:  
[commercial@tco.com.vn](mailto:commercial@tco.com.vn)  
[www.tancangoffshore.com](http://www.tancangoffshore.com)

# TAN CANG OFFSHORE SERVICES JSC.

## GENERAL ARRANGEMENT



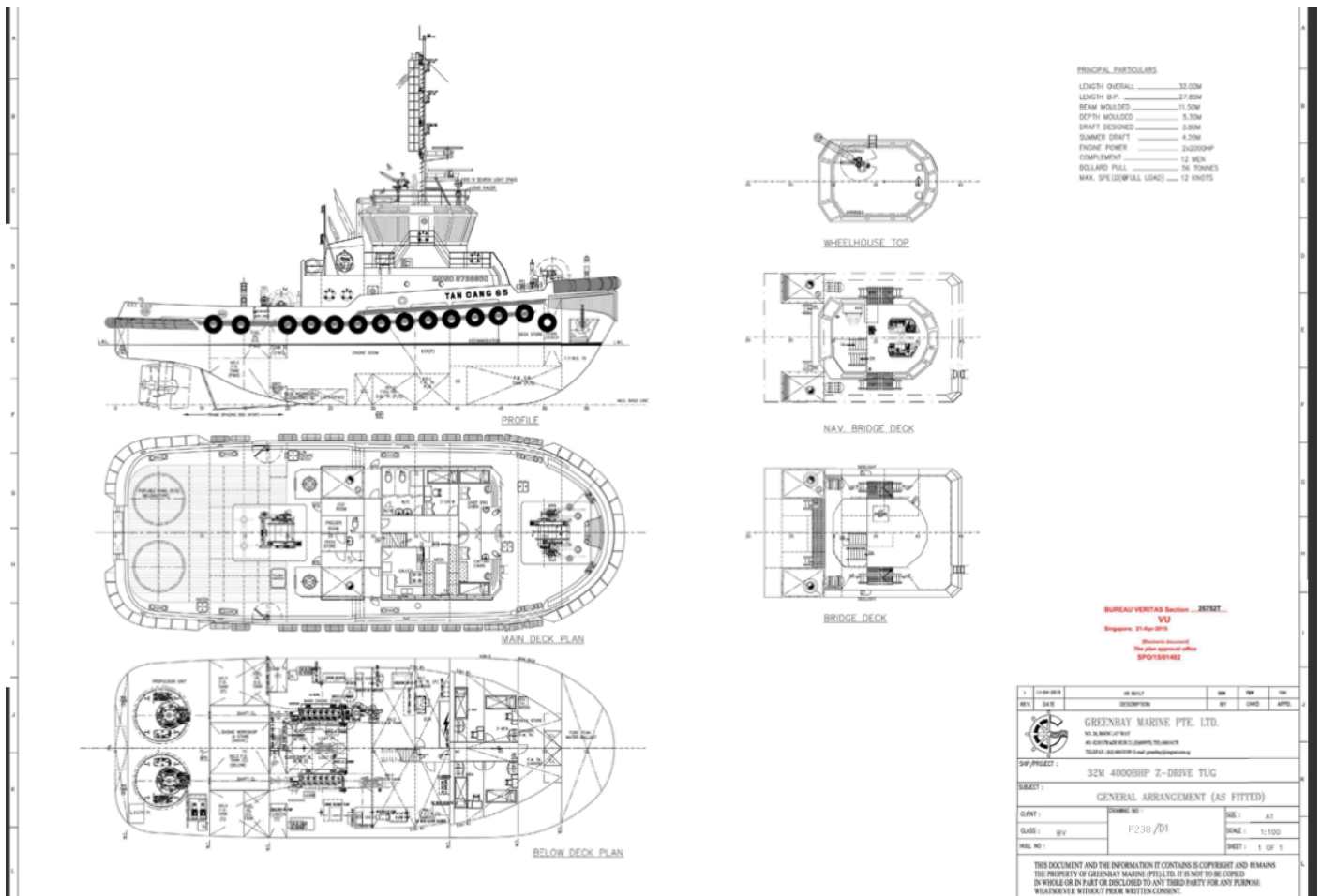
Technical parameters are subject to change without notice

TAN CANG OFFSHORE SERVICES JSC.

Contact:  
[commercial@tco.com.vn](mailto:commercial@tco.com.vn)  
[www.tancangoffshore.com](http://www.tancangoffshore.com)

# TAN CANG OFFSHORE SERVICES JSC.

## GENERAL ARRANGEMENT



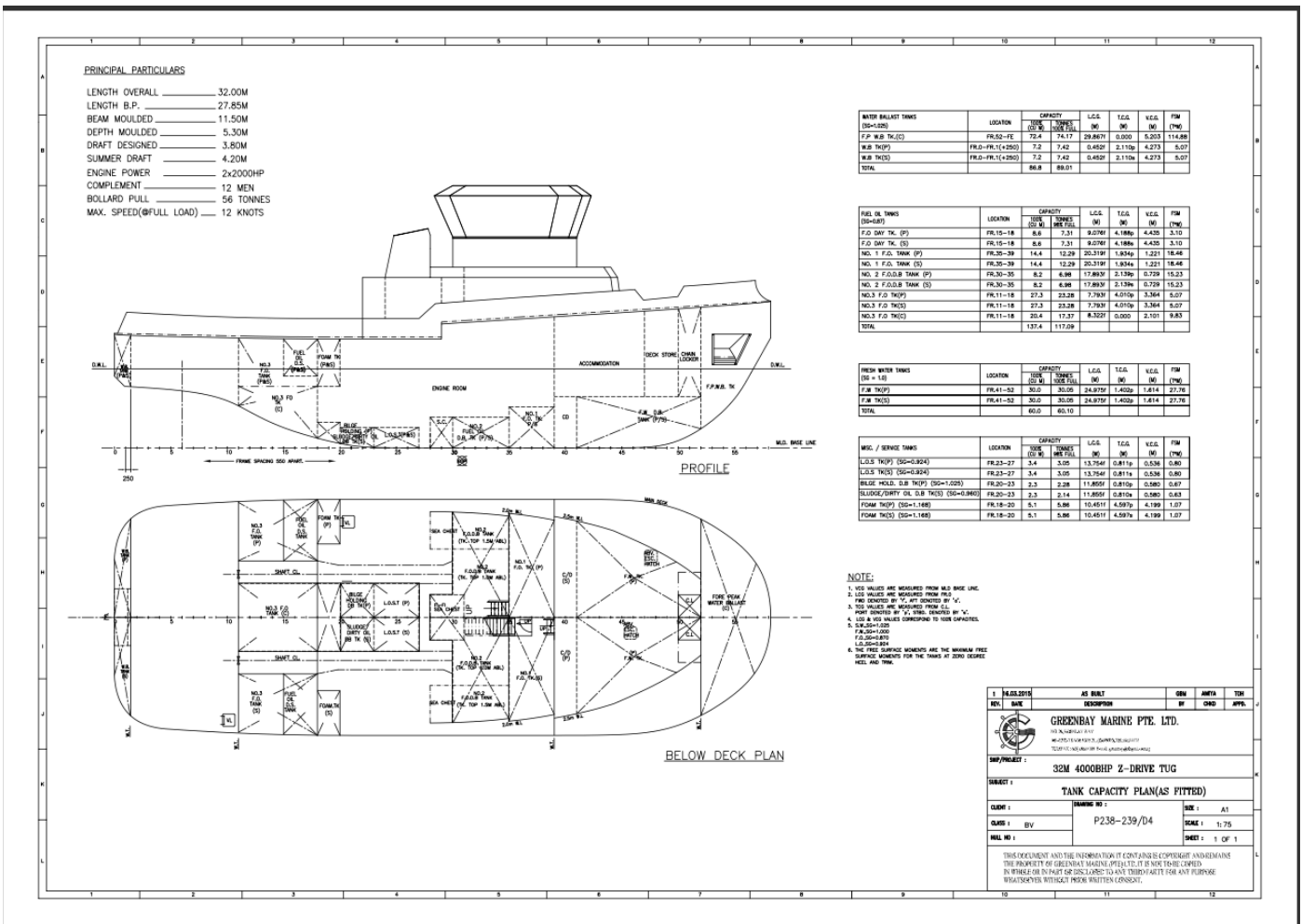
Technical parameters are subject to change without notice

TAN CANG OFFSHORE SERVICES JSC.

Contact:  
[commercial@tco.com.vn](mailto:commercial@tco.com.vn)  
[www.tancangoffshore.com](http://www.tancangoffshore.com)

# TAN CANG OFFSHORE SERVICES JSC.

## GENERAL ARRANGEMENT



Technical parameters are subject to change without notice

TAN CANG OFFSHORE SERVICES JSC.

Contact:  
 commercial@tco.com.vn  
 www.tancangoffshore.com