



TAN CANG OFFSHORE SERVICES JSC.

Vessel Specification



TANCANG 62

Technical Specification

Z-Drive Tug Vessel: 4,000 HP
 Bollard Pull: 58 T
 FiFi 1/2

“Our success is driven by the customers”



MAIN PARTICULARS

GENERAL

Year Built	2015.
Home Port	Saigon.
Class	BV/VR
Notation	BV Class of I + Hull+ Mach Tug. VRH Tug/VHM.
Flag	Vietnam.
Official No	VNSG-2234-TK.
IMO No	9738648.
Call Sign	3WOD9.

PRINCIPAL DIMENSIONS

Length Overall	32.0 m.	Maximum Speed	Up to 12.0 knots.
Breadth Moulded	11.5 m.	Economical Speed	TBA.
Depth Moulded	5.30 m.	Bollard Pull (A H E A D)	Up to 58.0 tones.
Draft (max)	3.85 m.	Bollard Pull (S T E R N)	Up to 58.0 tones.

PERFORMANCE

ACCOMODATION

Total	12 Berths		
Air Condition/Heating	Fully air condition for 12 Berths		

Technical parameters are subject to change without notice

TAN CANG OFFSHORE SERVICES JSC.

Contact:
commercial@tco.com.vn
www.tancangoffshore.com

TAN CANG OFFSHORE SERVICES JSC.

MACHINERIES

➔ PROPULSION SYSTEM

Main Engines	2 x Niigata 6L26HLX
	2 x 2000 BHP (1471 KW) at 750rpm.
Z-Propeller	2 x Niigata ZP 31 c/w fixed pitch propellers.
Generator	2 x Volvo Penta 96 Kw at 1500rpm.
Oily Water Separator	Boss, 2.2T/107, 15ppm,0.5m3/hr.
Sewage Treatment Plant	Taiko KiKai SBH-15

➔ FIFI

External Fire Fighting	External ½ FiFi with 1 x 1400 m3/hr @ 140MWC pump (M.E FPTO) with 1 x 1200 m3 / hr monitors
	Total 1200m3/hr

➔ COMMUNICATION AND NAVIGATION

Anchor Windlass	Double gypsies, double warping ends of 330mm dia and centre rope drum
	Capacity as per class requirement
	Speed 12m/min
	Weight of anchor 600kg
Aft Towing Winch	High Hilding Power Dia of chain cable 24mm dia. U2 Type
	Capacity 10T x 10m/min 1 st layer, 1T x 50m/min 1 st layer
	Hawser used 45mm dia SWR x 750m length Braking holdin 125 tons static (1 st layer)
Chain cable	550m x 24mm dia
Stern Roller	2000mm x 600mm dia.
SOLAS Rescue Boat & DaVit	1 shipset.

➔ DECK - TOWING EQUIPMENT

Radar	Furuno FR8062 Furuno FAR2117
VHF	Furuno FM8900S
Echo Sounder	Furuno FE-700
GPS	Furuno GP-150
Autopilot	Anschutz Nautopilot NP60
VHF Base System	ICOM IC-M304
Magnetic Compass	Lilley & Gillie Mk 2000
PA System	Vingtor
NAVTEX	Furuno NX-700B
EPIRB	McMurdo E5
2-way VHF	ICOM IC-GM 1600
SART	McMurdo S4
AIS	Furuno FA150
BNWAS	Marble
Doppler Speed Log	Furuno DS-80
Immarsat "C"	Furuno Felcom-18
Anemometer	Raymarine ST-60
Satellite Compass	Furuno SC 50
MF/HF SSB Radio	Furuno FS 1575
SBS MF/HF	1 x Furuno FS 1575
SSAS	1xFuruno Felcom 18 intergrated in Sat-C
LRIT	1xFuruno Felcom 18 intergrated in Sat-C
GMDSS	Type: A1+A2+A3

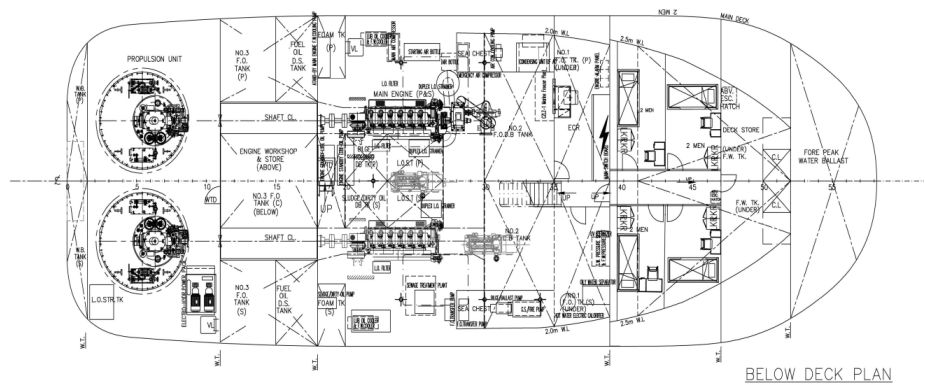
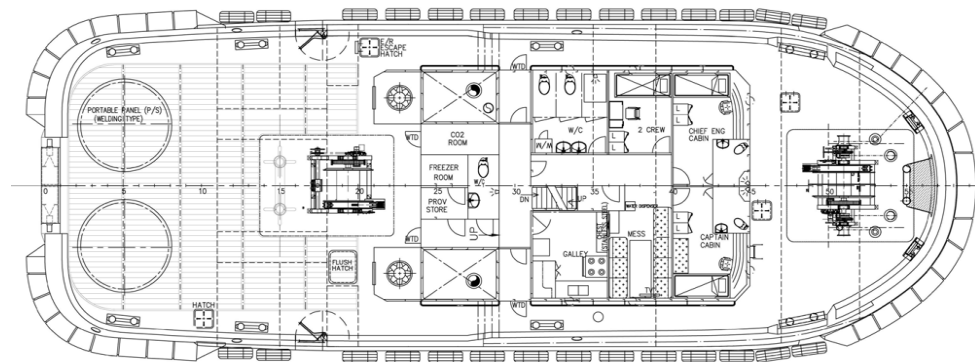
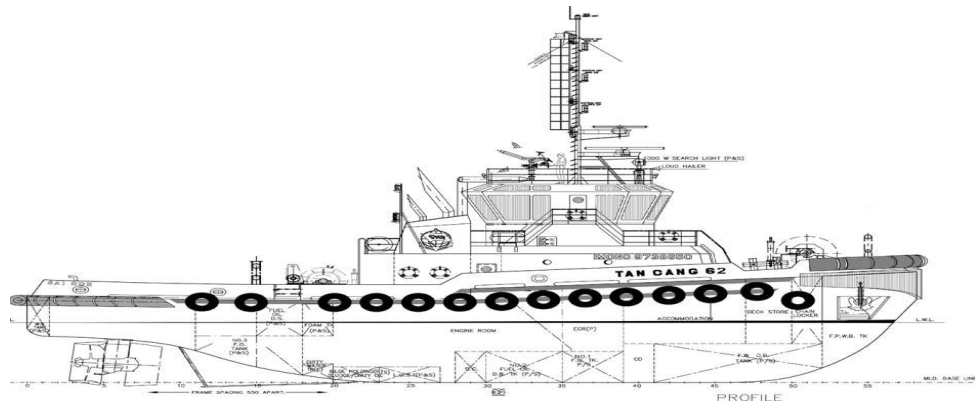
Technical parameters are subject to change without notice

TAN CANG OFFSHORE SERVICES JSC.

Contact:
commercial@tco.com.vn
www.tancangoffshore.com

TAN CANG OFFSHORE SERVICES JSC.

GENERAL ARRANGEMENT



Technical parameters are subject to change without notice

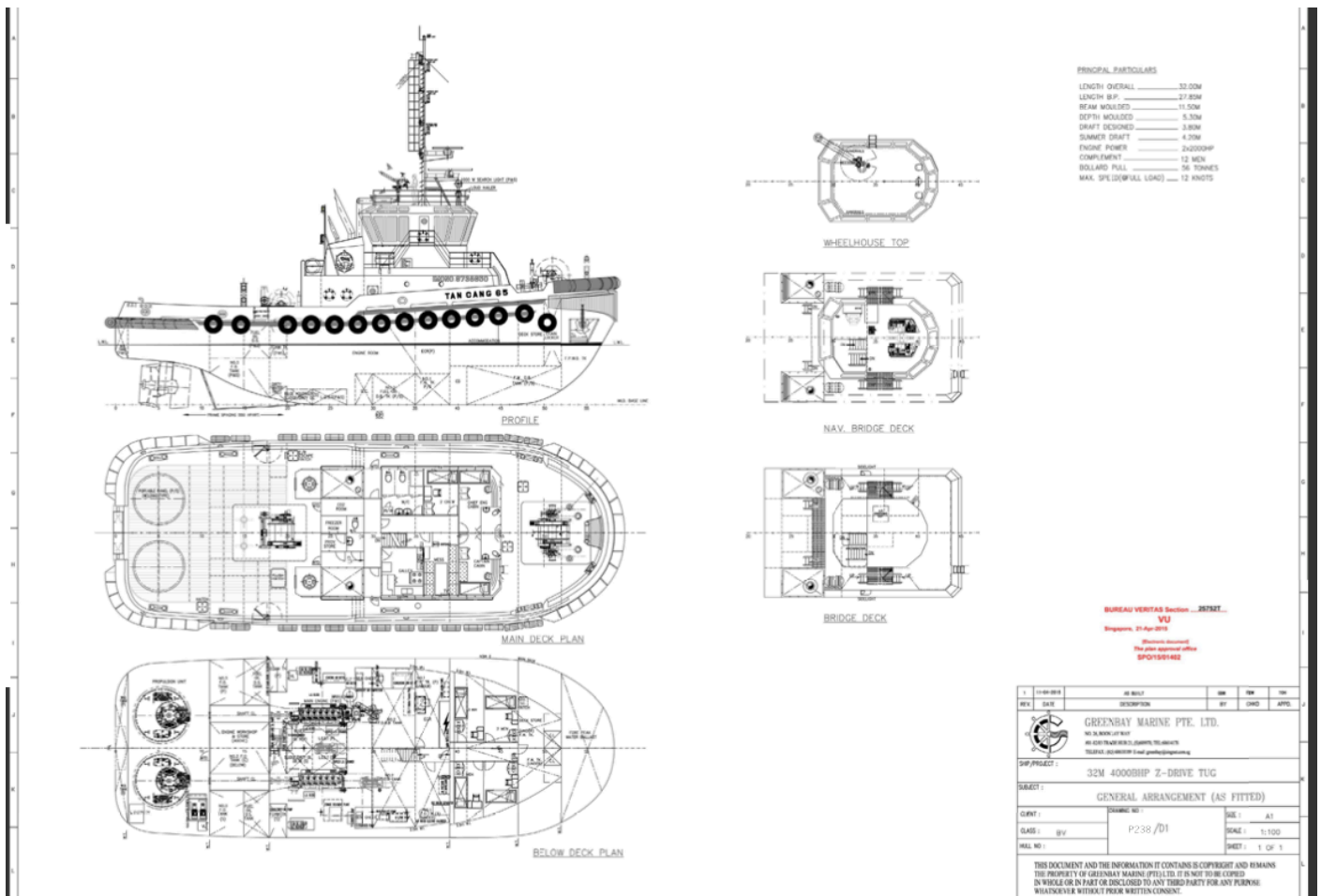
TAN CANG OFFSHORE SERVICES JSC.

Contact:
commercial@tco.com.vn
www.tancangoffshore.com



TAN CANG OFFSHORE SERVICES JSC.

GENERAL ARRANGEMENT



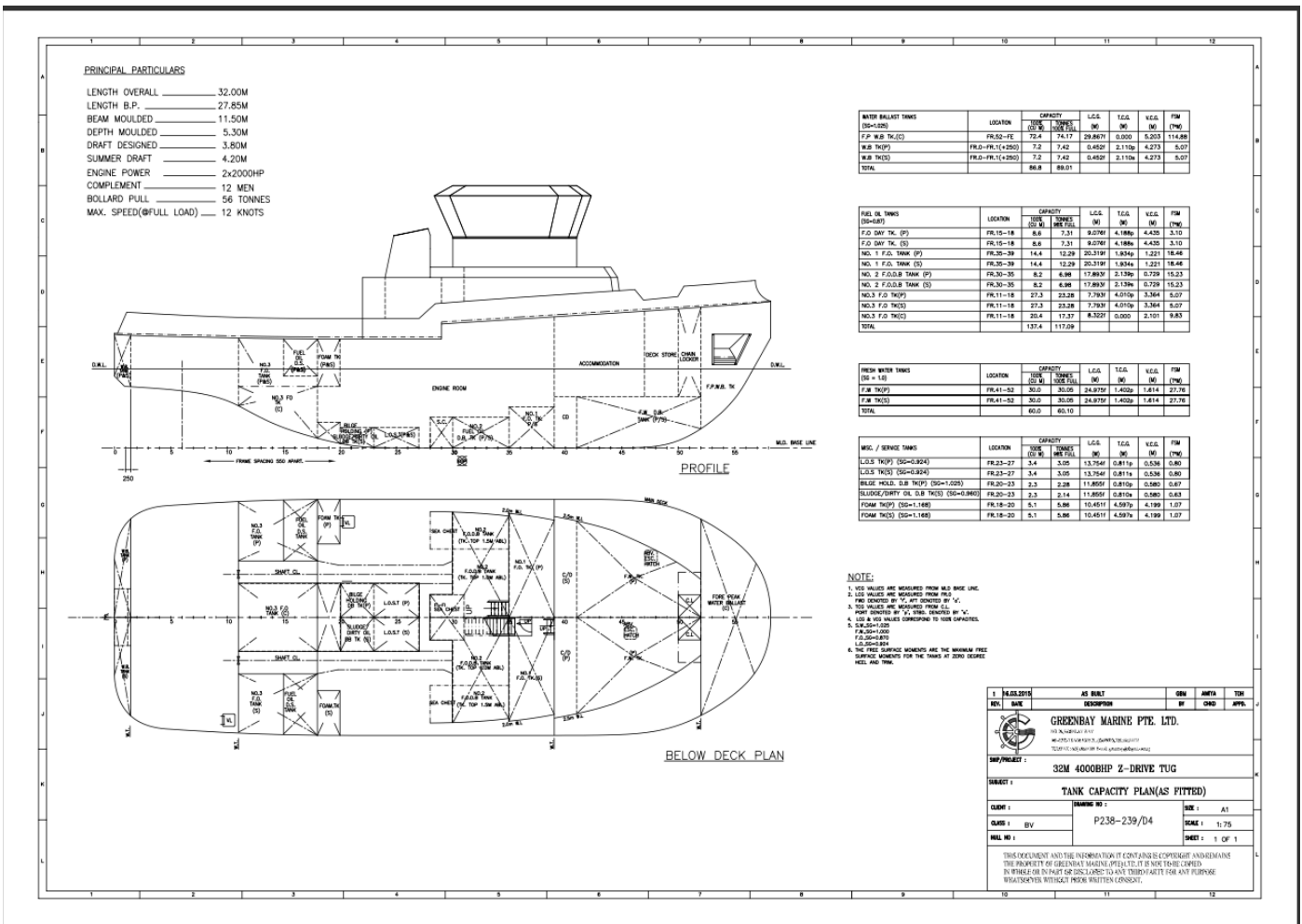
Technical parameters are subject to change without notice

TAN CANG OFFSHORE SERVICES JSC.

Contact:
commercial@tco.com.vn
www.tancangoffshore.com

TAN CANG OFFSHORE SERVICES JSC.

GENERAL ARRANGEMENT



Technical parameters are subject to change without notice

TAN CANG OFFSHORE SERVICES JSC.

Contact:
 commercial@tco.com.vn
 www.tancangoffshore.com