



TAN CANG OFFSHORE SERVICES JSC.

Vessel Specification



TC PACIFIC

Technical Specification

AHTS: 12,228 HP
DP2, FiFi class 1
Bollard Pull: 167 MT

“Our success is driven by the customers”

MAIN PARTICULARS

GENERAL

Class	BV
AHTS / Tug / Supply Rescue/ FiFi/ Towing Service Vessel / Multi Purpose Offshore	
Built	Malaysia
Year of delivery	2012
IMO	9559042
Call sign	3ENM6
Flag / POR	Vietnam

ACCOMODATION

Total	46 men
-------	--------

PRINCIPAL DIMENSIONS

Length Overall	76 m
Length BP	67.5 m
Breadth Moulded	18.50 m
Depth Moulded	8.00 m
Draft (max)	6.0 m

CARGO DECK/ TONNAGE

Deadweight	3,199 mt
GRT/NRT	3,518 / 1056 T
Deck Area	580.0 m2
Deck Strength	7.5 mt/m2
Deck Cargo Capacity	800 mt

CARGO CAPACITIES

Fuel Oil	1,300 m3
Portable Water	900 m3
Liquid Mud	789 m3

CARGO CAPACITIES (con't)

Bulk Cement	11,000 cu
Chain Locker	320 m3
Drill Water	1,700 m3

Technical parameters are subject to change without notice

TAN CANG OFFSHORE SERVICES JSC.

Contact:
commercial@tco.com.vn
www.tancangoffshore.com

TAN CANG OFFSHORE SERVICES JSC.

MACHINERIES

➔ MANEUVERING & PROPULSION SYSTEM

Main Engine	MAK Caterpillar 9M32C
Aux. Engine	Caterpillar C18
Total BHP	12,228 BHP
Propeller	2 Caterpillar MAK 9M 32C 4T, 9 cyl, 600 rpm
Stern Thruster	1 x 650 kW, 10 T, Electric Motor Driven DP2 x 2 Fwd
Bow Thruster	1 x 650 kW, 10 T, Electric Motor Driven DP2 x 2
Bollard Pull	167.0 T @ 100% MCR

➔ ELECTRIC POWER GENERATION

Main generator	2 Generators 2875 kVA (2300 kW), 440 V, 60 Hz 2 Generators 581 kVA (465 kW), 440 V, 60 Hz
Emergency Generator	Caterpillar 4.4

➔ DECK EQUIPMENT

Anchor Windlass	10 T @ 0 to 12 m/min, 2 warping drums 1 towing drum and 2 chain stopprt Chain Cables 495m total length, 50mm dia, 2 x AC14 anchors each 2295 kg. 2 x 180m long mooring rope P.P Rope 3" Cir
Anchor Chain	2 x 9 length u2 stud link 50 mm dia total port and stbd chain 495 mtr
Anchor	2 x AC14 High Holding Power @ 2295 kg
Tugger Winch	2 x 10 T Hydroiic Pull at 0=26 mtr/min, Drum Capacity 200 mtr x 24 mm Dia Wire
Capstan	2 x 10 T Electric capstan (ZICOM)
Deck Crane	5 T 15mtr

➔ TOWING & ANCHOR HANDLING EQUIPMENT

Anchor handling / Tow	1x Zicom HWTW - 150/58 x 2 double drum Waterfall (S/n. 113202) 250 T brake holding on drum 1 st layer Pull Speed 150 T at 0-6 m/min Drum capacity 1400 mtrs x 76mm wire Dia
Pennant Wire Drum	1 x Zicom Rope Reel / 350 mtr x 2 coil both end with gold nose
Guide Pin	300 T SWL towing pins
Shark Jaws	1 x 650 T Karm Fork of Hydraulic retractable type

➔ DP2 SYSTEM

DP-2 System	Kongsberg Maritime AS
-------------	-----------------------

➔ NAVIGATION AND COMMUNICATION EQUIPMENT

IMN No.1	Inmarsat-C - LRIT
IMN No.2	Inmarsat-C - SSAS

➔ FIRE FIGHTING & ANTIPOLLUTION EQUIPMENT

FIFI Class (1) with Water Spray Pump	2 x OGF Pump driven by M/E PTO each of 1980 cu m/hr
Monitor	2 x 1,200 m3/hr
Spray Boom	2 x 6 m P/S Fitted By Spray Flat Nozzle 40 Degree Spray Angle
Fixed Fire Extinguisher	CO2 Flooding System Engine Room Compartment
Fire Ext / Sta	13 Complete with hoses & Nozzles & Fire Box

➔ SAFETY EQUIPMENT

Life Raft	According to IMO & SOLAS regulations
Rescue Boat	1 x 6 persons, c/v davit & 40 HP outboard engine

➔ AUTOMATED INSTALLATIONS

1. General

The automation installation allow operation of the machinery installation when ship is underway, during manoeuvring, in port and at anchorage

2. Control Station

Monitoring and control station located in the Wheelhouse Without machinery spaced manned

3. Bridge Propulsion control

Speed control and emergency stopping of Main Engine Main shaft GearBox clutching and discluthing Controllable pitch propeller - pitch control

4. Automatic control & Monitoring of Service Auxiliaries Lubricating oil standby pumps

Main Engine Jacket fresh water HT and LT cooling standby pumps
Sea Water cooling standby pumps
Fuel Oil standby pumps

5. Automatic control & Monitoring of Complementary Auxiliaries

Starting Air Compressor

6. Electrical Power Plant

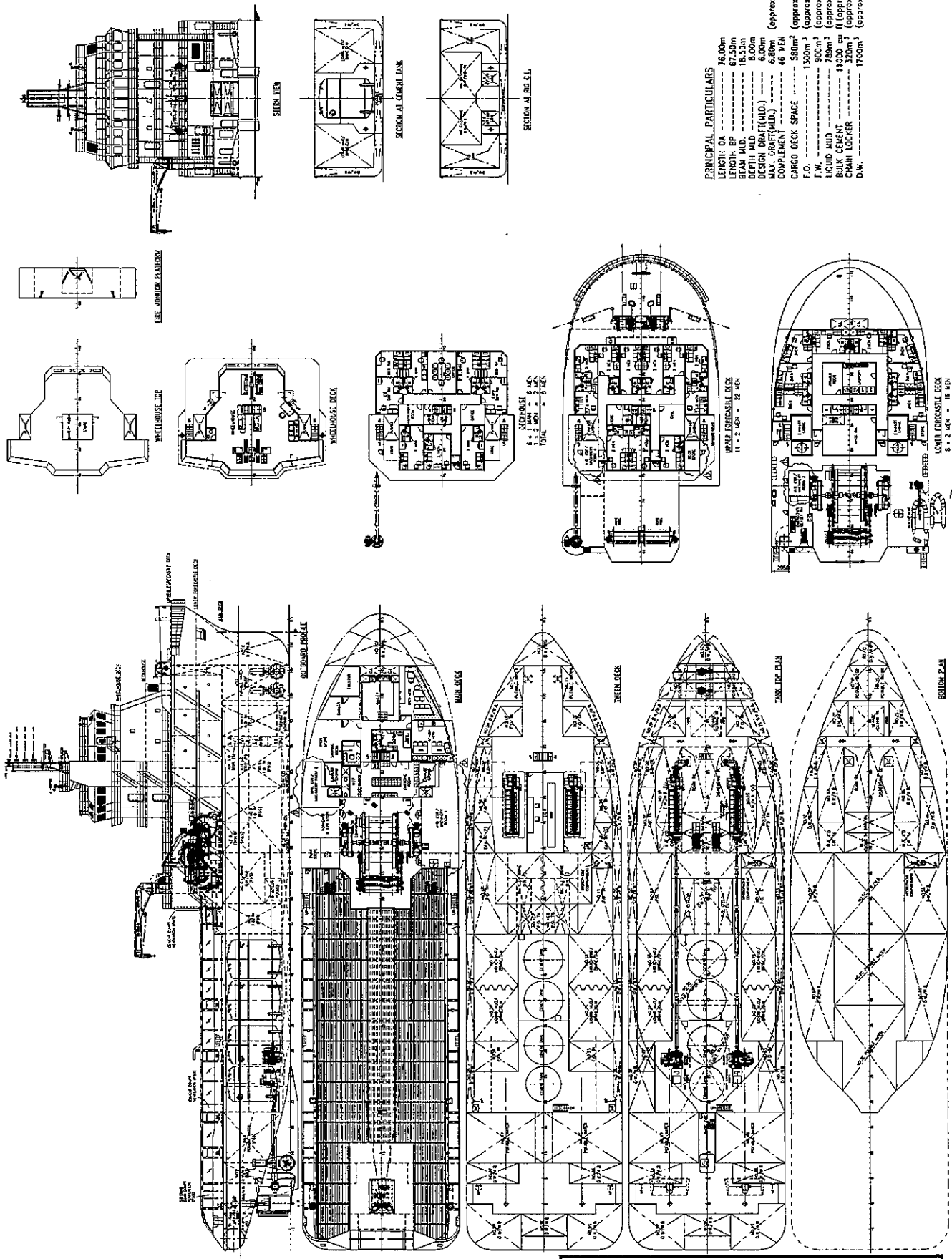
Two diesel engine driven generators with automatic starting, synchronising, load sharing and shedding Two Gearbox PTO drive shaft generator

Technical parameters are subject to change without notice

TAN CANG OFFSHORE SERVICES JSC.

Contact:
commercial@tco.com.vn
www.tancangoffshore.com

GENERAL ARRANGEMENT

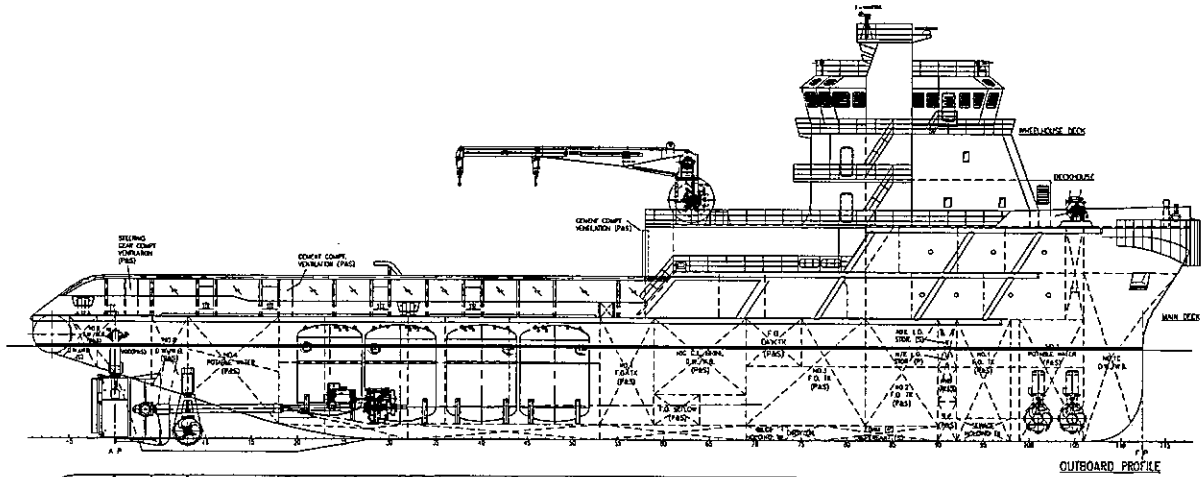


PRINCIPAL PARTICULARS

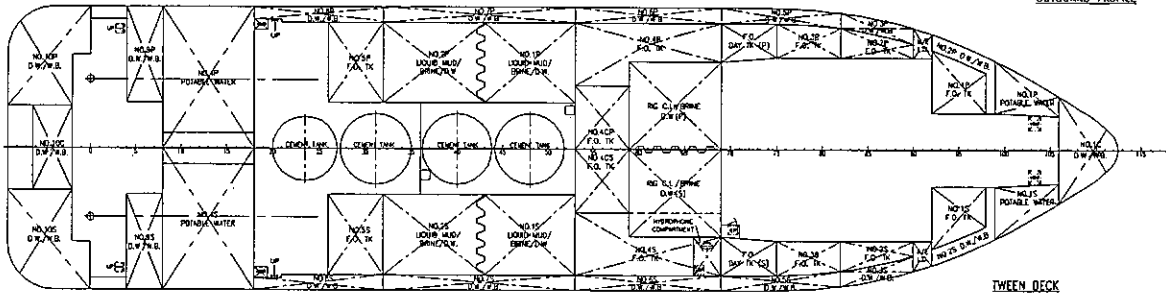
LENGTH OA	76.00m	(approx.)
LENGTH BP	67.50m	(approx.)
BEAM	18.00m	(approx.)
DEPTH	18.00m	(approx.)
DESIGN DRAFT (MID.)	6.00m	(approx.)
MAX. DRAFT (MID.)	6.80m	(approx.)
COMPLEMENT	46 MEN	(approx.)
CARGO DECK SPACE	580m ²	(approx.)
T.O.	1300m ³	(approx.)
T.W.	900m ³	(approx.)
LIQUID MTD	789m ³	(approx.)
BULK CEMENT	11000 cu ft	(approx.)
CHAIN LOCKER	320m ³	(approx.)
D.W.	1750m ³	(approx.)

BUREAU VERITAS
 Stamped document, refer to 1st page

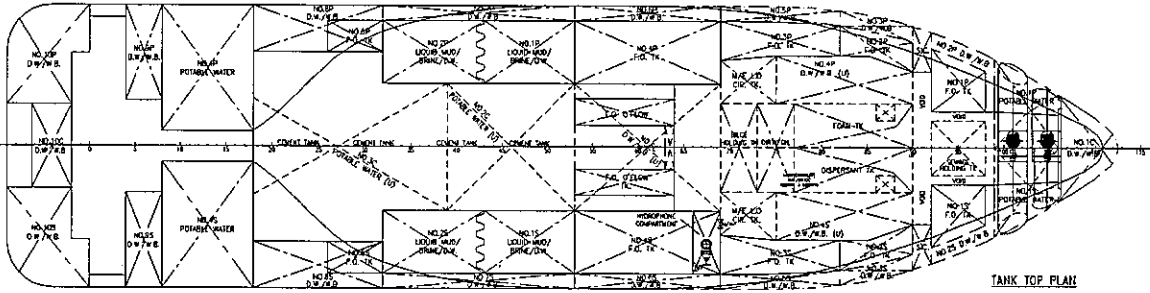
TANK ARRANGEMENT



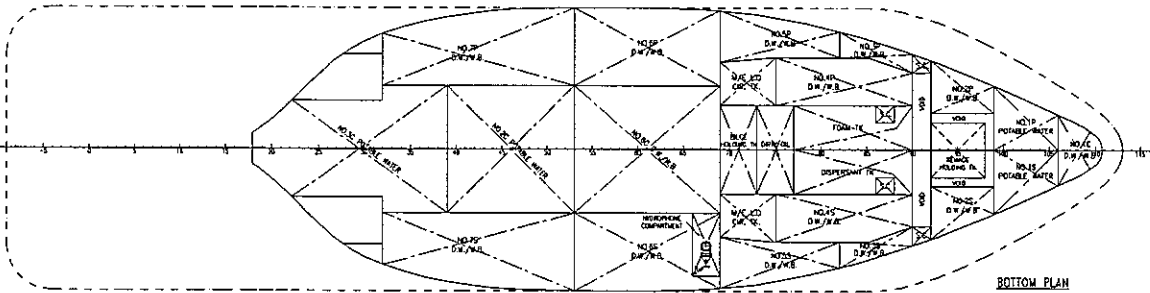
OUTBOARD PROFILE



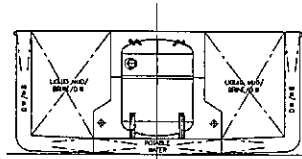
TWEEN DECK



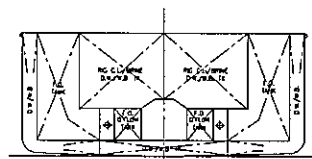
TANK TOP PLAN



BOTTOM PLAN



SECTION AT COVENT TANK



SECTION AT RIG C.L.