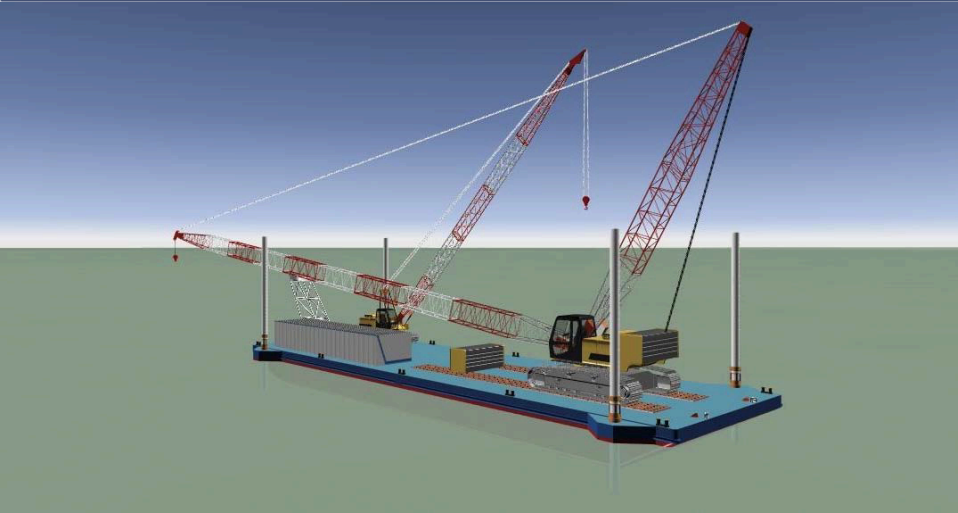




# TAN CANG OFFSHORE SERVICES JSC.

## Vessel Specification



# TCO - OEI 01

## Technical Specification

CRANE SPUD BARGE  
330 ft

*“Our success is driven by the customers”*



### MAIN PARTICULARS

#### GENERAL

Class	ABS + VIRES "CRANE SPUD BARGE"
Length O.A	100.58 meters
BREADTH MLD.	30.48 meters
DRAFT MLD.	6.10 meters
DRAFT (LOADED)	4.514 meters
GRT/NRT	4,951T/1,486T
DEAD WEIGHT DWT	Approx. 11,000T
NAVIGATION AREA	OCEAN GOING
<b>CRAWLER CRANE (OPTIONAL)</b>	
DEMAG CC6800-1 (BSSL-138m boom)	230 Tons at hook height of 120m and radius of 30m

#### WORKING AREA

MINIMUM WATER DEPTH	0m "Grounded on the seabed"
MAXIMUM WATER DEPTH	20m

#### SPUD LEGS

NUMBER OF LEG	4 NOS
LENGTH	40.00 meters
DIAMETER	1.20 meters
LEG WEIGHT	40 tons
HYDRAULIC SPUD LIFTERS	100 tons

#### DECK CAPACITY

LOAD CARRING CAPACITY	10,000 Tons
DECK AREA	3,000 m2
DECK LOAD	20 T/m2

#### WEATHER LIMITATIONS

CURRENT	1.0 m/second
WIND SPEED	15 m/second
SIGNIFICANT WAVE HEIGHT	1.5 meters
SWELL	1.0 meter

Technical parameters are subject to change without notice

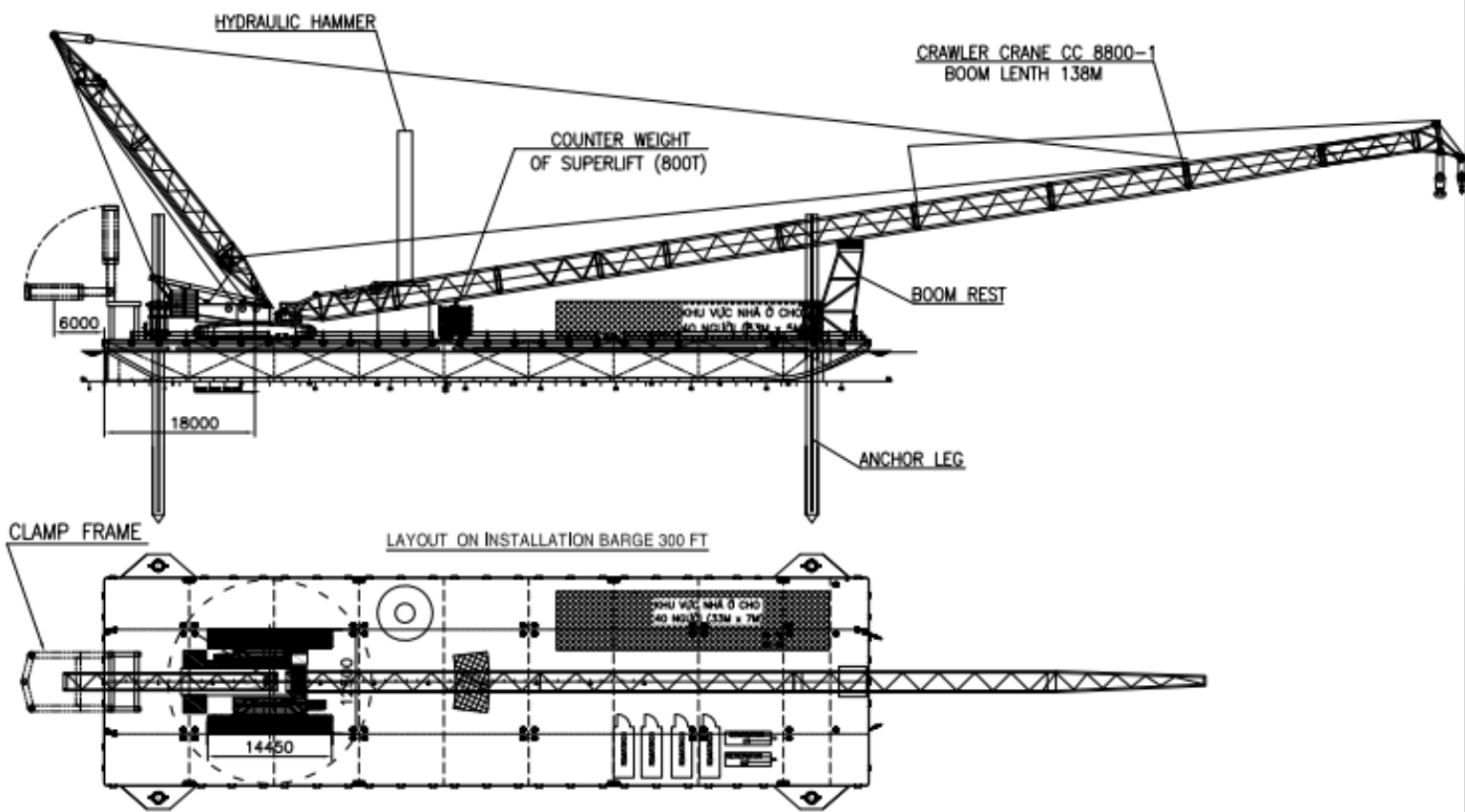
TAN CANG OFFSHORE SERVICES JSC.

Contact:  
commercial@tco.com.vn  
www.tancangoffshore.com



# TAN CANG OFFSHORE SERVICES JSC.

## GENERAL ARRANGEMENT



Technical parameters are subject to change without notice

TAN CANG OFFSHORE SERVICES JSC.

Contact:  
[commercial@tco.com.vn](mailto:commercial@tco.com.vn)  
[www.tancangoffshore.com](http://www.tancangoffshore.com)