



TAN CANG OFFSHORE SERVICES JSC.

Vessel Specification



EVAY

Technical Specification

AHS Vessel : 10,800 HP
 DP2
 Bollard Pull: 140,2 MT

“Our success is driven by the customers”

MAIN PARTICULARS



PERFORMANCE	
Class	ABS/VR
IMO	9571002
Year of deliver	2010
Built	PT. BATAMEC Shipyard, Indonesia
PERFORMANCE	
Maximum Speed	14 knots / 40 m3/ day
Economical Speed	10 knots / 24 m3/ day
Port Usage	2 m3/ day
Type of Fuel	MGO
Bollard Pull	140,2 mt
ACCOMODATION	
Berth/ Cabin	6 x 1 bunk cabins
	2 x 2 bunks cabins
	8 x 4 bunk cabins
Total	42 men
Hospital	1 x 1 bunk cabins
All cabins fully air-conditioned & all attached with w/c toilet	

PRINCIPAL DIMENSIONS

Length Overall	67.00 m
Length BP	62.33 m
Breadth Moulded	16.00 m
Depth Moulded	7.0 m
Draft (max)	6.0 m
Freeboard, min	1.00 m

CAPACITIES

Fuel Oil	1240 m3
Fresh water	240 m3
Drill water/ Ballast	760 m3
Liquid Mud/ Brine	400 m3
Rig Chain Locker/ Brine, DW	200 m3
Cement Tank / Barite	4 x 62 m3; MacGREGOR
Freezer/ Chiller	10 m3/ 10 m3
Foam/ Detergent ORO	13 m3/ 16 m3

CARGO DECK/ TONNAGE

Deadweight	2,326 mt
Clear Deck Area	420 m2 minimum 400 m2
Deck Strength	5.0 mt/m2 uniform loading
Deck Cargo Cap	800 mt
GRT/NRT	2,310 / 693
Lightship	2,233.66 mt

DISCHARGE CAPACITY

Fuel Oil	1 x 150 m3/hr @ 70 m head; PG (Ing. Per Gjerdrum AS)
Fresh water	1 x 150 m3/hr @ 70 m head; PG (Ing. Per Gjerdrum AS)
Drill water/ SWB	1 x 150 m3/hr @ 70 m head; PG (Ing. Per Gjerdrum AS)
Liquid Mud/ Brine	1 x 100 m3/hr @ 70 m head; PG (Ing. Per Gjerdrum AS)
Bilge / Ballast	2 x 45 m3/hr @ 70 m head; PG (Ing. Per Gjerdrum AS)
GS / Fire pump	2 x 45 m3/hr @ 70 m head; PG (Ing. Per Gjerdrum AS)
Bulk Cement / Barite ORO	2 x 30 m3/hr @ 70 m head; PG (Ing. Per Gjerdrum AS)

TAN CANG OFFSHORE SERVICES JSC.

Contact:
commercial@tco.com.vn
www.tancangoffshore.com

TAN CANG OFFSHORE SERVICES JSC.

MACHINERIES

MANEUVERING & PROPULSION SYSTEM

Bow Thruster	2 x 600 kw electric-driven Wartsila LIPSTRONIC 7000 Ttb Tunnel type (CPP); 8T thrust
Main Generator	2 x 590 kw @ 1800 rpm / 440V / 3Ph / 60 Hz Caterpillar 3412DITA
Emergency Generator	1 x 84 kw @ 1800 rpm / 440V / 3Ph / 60 Hz Caterpillar C4.4DITA
Shaft Generator	2 x 1520 kw @ 1800 rpm / 440V / 3Ph / 60 Hz Leroy Somer LSA 52,2 M60/4P
Rudders	2 x high performance streamline Becker
Steering Gear	2 x Hatlapa; 7Tm; 45 deg
Stern Thruster	1 x 600 kw electric-driven Wartsila LIPSTRONIC 7000 Ttb Tunnel type (CPP); 8T thrust
Main Engine	2 x 4000 kw (5440 bhp) @ 750 rpm Wartsila 8L32
Propulsion	2 x CPP in Kort Nozzles; Wartsila Lipa

DECK EQUIPMENT

Anchor Windlass	1 x electro-hydraulic RRM Brattvaag LBF41040
Drum	Suit' for 439 m x (Ø)48 mm rope rated pull 12.8 mt @ 14.2 m/min
Gypsy	Suit' for (Ø)40 mm chains rated pull 12 mt @ 14.5 m/min
Warping Drum	(Ø) 400 mm x (Ø)450 mm (L) rated pull 12.8 mt @ 14.2 m/min
Anchor Chain	247, m p/s, 220m stbd/s x Ø 40 mm Grade U2 (each side)
Bow Anchors	2 x 2,310 kg, HY-14 HHP type high holding power anchors
Capstan	2 x 10 mt @ 14.6 m/min, electro-hydraulic; RRM Brattvaag CMXC22009K01F24
Tugger Winch	1 x 11 mt @ 19 m/min, electro-hydraulic; RRM Brattvaag LAKMX2202
Drum Capacity	325 m (L) x Ø 25 mm
Deck Crane	1 x 0,9 T @ 15 Fixed-boom type Hae An
Towing/ AH Winch	1 x electro-hydraulic; RRM Brattvaag SL250W/BSL250W
Lower Drum FWD Cap (Tow)	2000 m (L) x Ø 76 mm SWR (on drum - 1200m Ø 76 mm)
Upper Drum AFT Cap	2000 m (L) x Ø 76 mm SWR (on drum - 800m Ø 76 mm)
Line Pull	250 mt @ 8.5 m/min at 1 st layer 31 mt @ 29,1 m/min @ 1 st layer 88 mt @ 14 m/min at 1 st layer
Brake Capacity	320 mt static @ 1 st layer; Controlled at aft control in wheelhouse
Gypsies	1 for 3"/ 1 for 3.5" chains
Warping Drums	Nil
Stern Roller	4.00 m (L) x 2.00 m (dia) Hankook; SWL 300 mt mm) dia SWR
Karm Forks	2 x electro-hydraulic; SWL 300 mt
Tow pins	2 x electro-hydraulic retractable Karm Towing Pins: SWL 300 mt
Rope Reel	1 x electro-hydraulic RRM Brattvaag LAKMX631010
Drum capacity	2000 m (L) x Ø 76 mm SWR (on drum - 1200m Ø 76 mm - spare tow wire)

NAVIGATION AND RADIO EQUIPMENT

GMDSS (Area 3)	Furuno RC-1800T (Area 3) comprising:
VHF Radio	2 x Furuno FM-8800S with built-in DSC
SSB	1 x Furuno FS-2571C with built-in DSC
EPIRB	1 x McMurdo E5 SMARTFIND (406 MHz)
SART	2 x McMurdo S4 (9 GHz)
Navtex Receiver	1 x Furuno NX-700 (518 KHz)
Portable	3 x McMurdo R2 (25 KHz)
Inmarsat C	Furuno Felcom 15 & "COM-2"
Radar	1 x Furuno FAR-2137 (S Band ARPA Radar) 1 x Furuno FAR-2117 (X Band ARPA Radar)
Gyrocompass	2 x Anschutz Standard 22
Magnetic Compass	1 x Cassens & Plath Reflecta 1 (10024)
Autopilot	1 x Anschutz Nautopilot NP2015
DGPS	2 x Veripos LID3S integrated positioning unit
GPS	2 x Furuno GP 150
Joystick	Converteam DPS - 21
Echo Sounder	1 x Furuno FE-700
Speed log	1 x Furuno DS-80
AIS	1 x Transas T-103
Multi display	1 x Furuno RD 30
DP	Converteam ADP Workstation DPS - 21
Wind indicator	2 x Young Marine Win Tracker 06206 Wind Observer II Ultrasonic Anemometer
Vessel' Public Address System	Zenital Marin PA - Talkbalk System & Self-Powered Telephones

FIRE FIGHTING & ANTIPOLLUTION EQUIPMENT

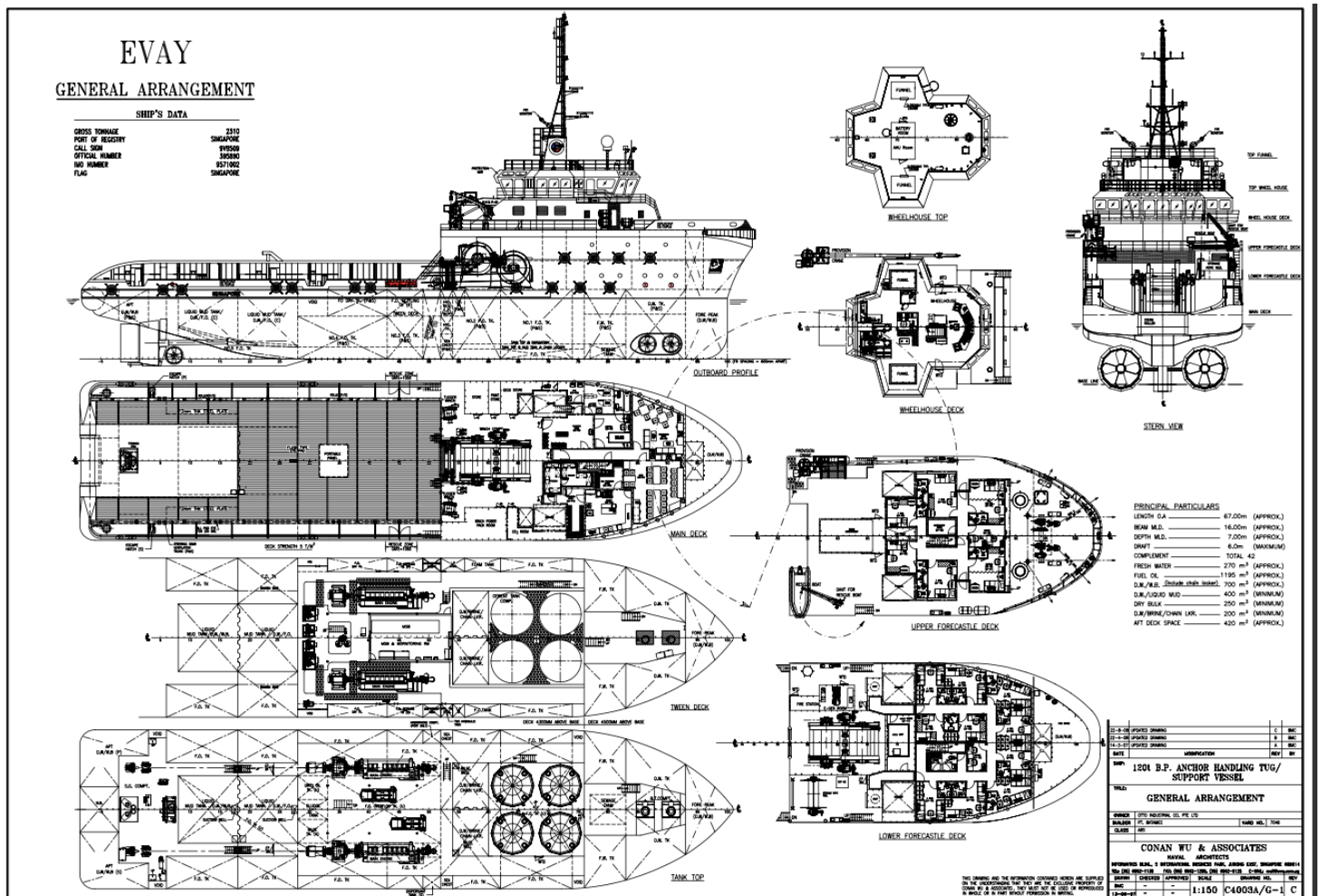
EXTERNAL	
FIFI System	Class (1) with water curtain all round
Fire Pump	2 x 1,680 m ³ /hr @13 bar, FFS SFP250x350 driven by front PTO of M/E Monitor
(water/foam)	1 x 300-1200 m ³ /hr, FFS1200-300LB
(water)	1 x 1200 m ³ /hr, FFS1200LB
Oil Dispersant System	In-Line Induction Principle using GS pump 75 m ³ /hr, 2 x 1 ¼" UOC 900 Nozzle, 1 x MI-80F Iline Inductor
INTERNAL	
Emergency Fire Pump	1 x 35 m ³ /hr @ 60m head; PG Marine
BA Recharging Comp	Nil
CO2 System for engine room	1 x Unitor
Local Application Fire Fighting	1 x Unitor
Fire Detection & Alarm System	MINERVA MARINE T1016 in living spaces & engine room
MISCELLANEOUS	
Life Raft	4 x 25/2 x 20 men SOLAS approved type
Rescue Boat	1 x 6 men inflatable DSB 5.1 SR/IRB c/w 26,5 kW Yanmar D36 Outboard Engine
Oily Water Separator	1 x 1 m ³ /hr c/w 15 ppm alarm Facet Intl
Sewage Treatment	3,5 m ³ per day (2,57 kg BODs per day)
Crew	16

TAN CANG OFFSHORE SERVICES JSC.

Contact:
commercial@tco.com.vn
www.tancangoffshore.com

TAN CANG OFFSHORE SERVICES JSC.

GENERAL ARRANGEMENT



TAN CANG OFFSHORE SERVICES JSC.

Contact:
commercial@tco.com.vn
(+84) 989 750 880/ (+84) 985 848 116
www.tancangoffshore.com



TAN CANG OFFSHORE SERVICES



Address

**TAN CANG OFFSHORE
SERVICES JOINT STOCK
COMPANY
(TC OFFSHORE, JSC)**

11 Nguyen Cong Tru St.,
Dist. 1, HCM City, Vietnam



Phone & Fax

P: + +848 39 143 981
+39 143 982
F: +848 38 216 446



Mail & Web

M: commercial@tco.com.vn
W: www.tancangoffshore.com
www.saigonnewport.com.vn