



# TAN CANG OFFSHORE SERVICES JSC.

## Vessel Specification



# TANCANG 89

## Technical Specification

AHS Vessel : 10,800 HP  
DP2  
Bollard Pull: 148 MT

*“Our success is driven by the customers”*

### MAIN PARTICULARS

#### GENERAL

Built	Batam, Indonesia
Year of delivery	11/2008
GRT/NRT	2310/693
Class	VR, ABS
Notation	+A1, Towing Vessel, AH, Fire Fighting Vessel Class 1, Offshore Support Vessel, E0, +AMS, +ACCU, DPS-2 VRH Tug Vessel, FFVI, OSV, B DPS, VRM M10
Flag (Port of Registry)	Vietnam/Saigon Port
IMO Number	9487201

#### ACCOMODATION

Berth	Total 42 berths
Hospital	1 x 1 berth cabin =1
All cabins fully air-conditioned & all c/w attached toilet (except 4 berth)	

#### PRINCIPAL DIMENSIONS

Length Overall	67.00 m
Length Waterline	64.90 m
Breadth Moulded	16.00 m
Depth Moulded	07.00 m
Draft (max)	06.00 m
Draft (design)	05.00 m

#### CAPACITIES (CONT)

Ballast/Drill Water /R Lckr	760 m3
Liquid Mud / DW	398.7 m3
Dry Bulk Tank	250 m3 (4 x 2200 ft3); BMH
Freezer / Chiller	10 m3 / 10 m3
Foam / Detergent	13 m3 / 16 m3
Rig Chain Locker / Brine / DW	203.1 m3

#### CAPACITIES

Deadweight	2335.5 mt
Deck Cargo	1000.0 mt
Deck Strength	10.0 mt/m2 uniform loading
Clear Deck Area	420 m2
Fuel Oil	1194.2 m3
Fresh Water	239.2 m3

#### PUMPS

Fuel Oil	1 x 150 m3/hr @ 75m head; PG Marine
Fresh Water	1 x 150 m3/hr @ 75m head; PG Marine
SWB/Drill Water	1 x 150 m3/hr @ 75m head; PG Marine
Liquid Mud / Brine	1 x 100 m3/hr @ 70m head; PG Marine Equipped with electrical agitators
Bilge/Ballast	2 x 45 m3/hr @ 60m head; PG Marine
GS / Fire Pump	2 x 45 m3/hr @ 60m head; PG Marine
Dry Bulk	2 x 30 m3/min @ 80 psi air compressors; BMH Nordstroms system fitted with dryers

Technical parameters are subject to change without notice

TAN CANG OFFSHORE SERVICES JSC.

Contact:  
commercial@tco.com.vn  
www.tancangoffshore.com

# TAN CANG OFFSHORE SERVICES JSC.

## MACHINERIES

### PERFORMANCE

Maximum Speed	14 knots
Service Speed	12 knots
Economical Speed	10.5 knots
Type of Fuel	Marine Gas Oil
Bollard Pull	148 MT

### PROPULSION SYSTEM

Main Engines	2 x 4000 kw (5440 bhp) @ 750 rpm Wartsila 8L32
Main Generators	2 x 590 kw @ 1800 rpm / 440V / 3Ph / 60Hz Caterpillar 3412DITA
Emergency Generator	1x 84 kw @ 1800 rpm / 440V / 3Ph / 60Hz Caterpillar C4.4DITA
Shaft Alternator	2 x 1600 kw @ 1800 rpm / 440V / 3Ph / 60Hz Leroy Somer LSA 52.2 M60/4p
Stern Thruster	2 x 600 kw electric-driven Wartsila LIPSTRONIC 7000 TTb tunnel type (CPP); 8T thrust
Bow Thruster	2 x 600 kw electric-driven Wartsila LIPSTRONIC 7000 TTb tunnel type (CPP); 8T thrust
Steering Gear	2 x Hatlapa; 7Tm; 35 deg
Propulsion	2 x CPP in Kort Nozzles; Wartsila Lips
Rudders	2 x high performance streamline Becker

### DECK EQUIPMENT

Anchor Windlass	1 x electro-hydraulic RRM Brattvaag BMG41040
Drum	suit' for 300 m (L) x 48 mm (Ø) p/p rope rated pull 12.8 mt @ 14.2 m/min
Gypsies	suit' for 40 mm (Ø) chains rated pull 12 mt @ 14.5 m/min
Warping drum	400 mm (dia) x 450 mm (L) rated pull 12.8 mt @ 14.2 m/min
Bow Anchors	2 x 1920 kg high holding power anchors
Chains	330 m (L) x 40 mm (Ø) Grade U2 (each side)
Capstan	2 x 11 mt @ 19m/min electro-hydraulic: RRM Brattvaag LAKMX2202
Tugger Winch	2 x 11 mt @ 19m/min electro-hydraulic: RRM Brattvaag LAKMX2202 Drum Capacity : 325 m (L) x 25 mm (dia) SWR
Deck Crane	SWL 1 x 15 T @ 15m, Max 1 x 1.5 @ 15m. Fixed-boom type Hankook
Towing/AH Winch	1 x electro-hydraulic double drum; RRM Brattvaag SL250W/BSL250W
Upper Drum Cap (Tow)	2000 m (L) x 76 mm (Ø) SWR
Lower Drum Cap (AH)	2000 m (L) x 76 mm (Ø) SWR
Line Pull	250 mt @ 8.5 m/min at 1 st layer 88 mt @ 14 m/min at 1 st layer 31 mt @ 29 m/min @ 1st layer
Stall Pull	250 mt @ 1st layer
Brake Capacity	320 mt static @ 1 st layer Remote control from aft control stand in wheelhouse
Gypsies	1 for 3" / 1 for 2.5" chains
Warping Drums	Nil

### RADIO AND NAVIGATION EQUIPMENT

GMDSS	Furuno RC-1800T (Area 3) comprising :
SSB	1x Furuno FS-2570 with built in DSC

Inmarsat C	Furuno Felcom 15 & Felcom 15 SSAS
VHF Radio	2 x Furuno FM 8800S with built-in DSC
Navtex Receiver	1 x Furuno NX 700 (518 KHz)
SART	2 x McMurdo S4 (9 GHz)
EPIRB	1 x McMurdo E5 SMARTFIND (406 MHz)
Portable VHF Radios	3 x McMurdo R2 (25KHz)
Radar	1 x Furuno FAR 2137 (S Band ARPA Radar) 1 x Furuno FAR 2117 (X Band ARPA Radar)
Echo Sounder	1 x Furuno FE 700
GPS	1 x Furuno GP 150
Gyrocompass	1 x Anschuetz Standard 22
Autopilot	1 x Anschuetz Nautopilot NP2015
Magnetic Compass	1 x Cassens & Plath Reflecta 1 (10024)
Weather Fax	1 x Furuno FAX 410
Speed Log	1 x Furuno DS-80
Wind Indicator	1 x Furuno RD 30
AIS	1 x Furuno FA-150
BNWAS	1 x Marble MS-421
DP	Convertteam ADP Workstation
Stern Roller	4.00m (L) x 2.00 m (dia) Hankook; SWL 300mt
Wire Chain Stoppers	2 x retractable Karm Fork; SWL 300 mt wire / chain size 60mm dia to 102mm dia
Tow Pins	1 pair; retractable Karmoy guide pins with horizontal locking tops; SWL 160 mt
Rope Reel	1 x electro-hydraulic RRM Brattvaag ALMX63012 Drum Capacity : 2000 m (L) x 76 mm (dia) SWR
Reefer Points	2 x 5pin x 32A 2 x 4pin x 32A

### FIRE FIGHTING & ANTI-POLLUTION EQUIPMENT

EXTERNAL	
FIFI System	Class 1 with water curtain all around
Fire Pump	2 x 1680 m <sup>3</sup> /hr @13 bar. FFS SFP250x350 driven by front PTO of ME
Monitors - (water/foam)	1 x 300-1200 m <sup>3</sup> /hr, FFS1200-300LB
- (water)	1 x 1200 m <sup>3</sup> /hr, FFS1200LB
Oil Dispersant System	In-line Induction Principle using GS pump 75 cub.m/hr 2 x 1 ¼" UOC 900 Nozzle 1 x MI-80F Inline Inductor

### INTERNAL

Emergency Fire Pump	1 x 35 m <sup>3</sup> /hr @ 60m head; PG Marine
BA Recharging Comp	1 x 260 ltrs/min @ 300 bar; Bauer Kompressoren Mariner 250-E

### CO2 system in engine room

Fire Detection & Alarm System in living spaces & engine room

### SAFETY AND ENVIRONMENT

Liferafts	4 x 25 / 2 x 20 men SOLAS approved type
Rescue Boat	1 x 6 men inflatable DSB 5.1 SR/IRB c/w 26.5 kw Yamaha D36 Outboard Engine
Oily Water Separator	1 x 1 m <sup>3</sup> /hr c/w 15 ppm alarm Facet Intl
Water Maker	1 x 12 m <sup>3</sup> /day Reverse Osmosis, Aquamar
Sewage Treatment Plant	1 x 42 men; Facet Intl
Incinerator	1 x 180,000 kcal/hr Industmarine

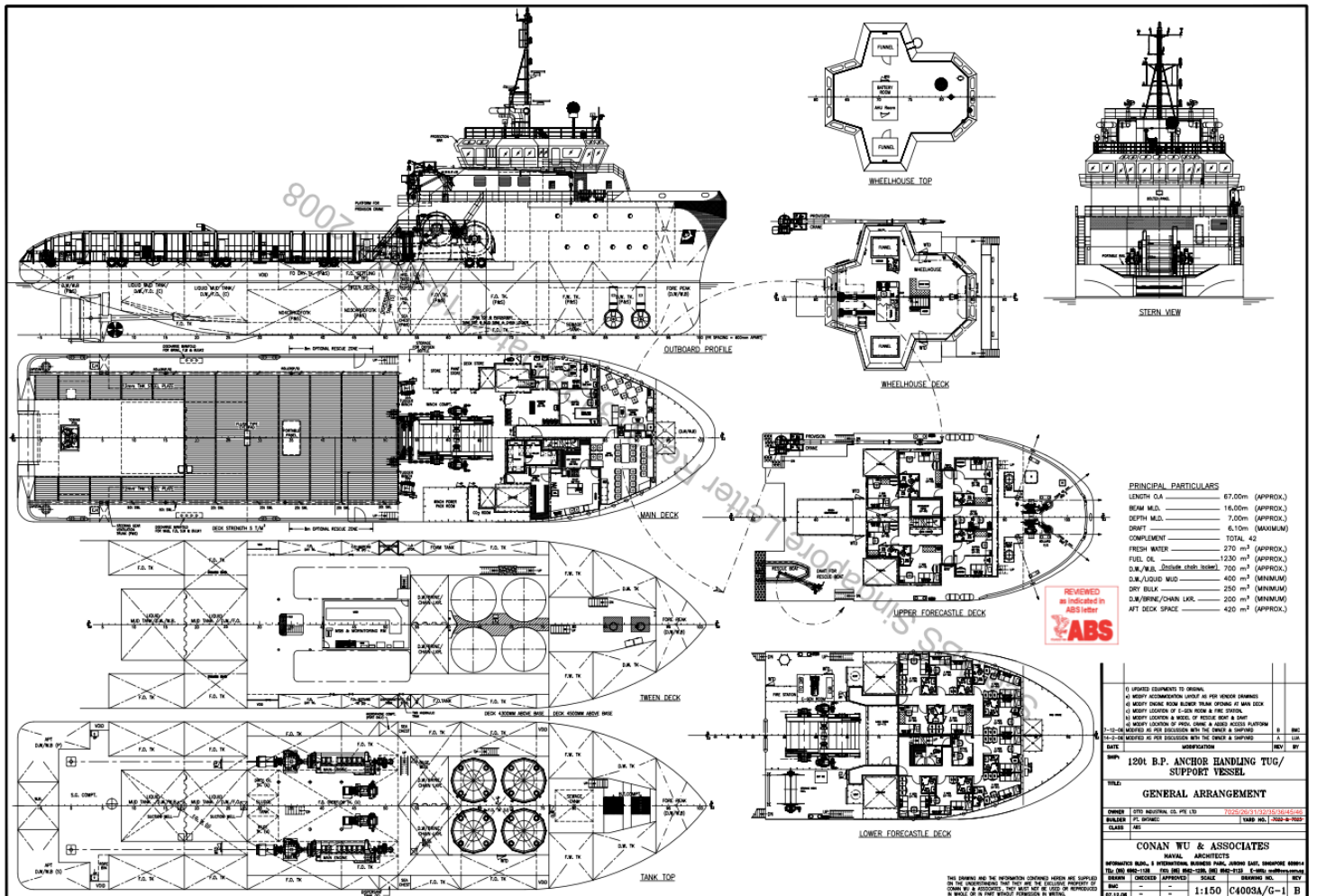
Technical parameters are subject to change without notice

TAN CANG OFFSHORE SERVICES JSC.

Contact:  
commercial@tco.com.vn  
www.tancangoffshore.com

# TAN CANG OFFSHORE SERVICES JSC.

## GENERAL ARRANGEMENT



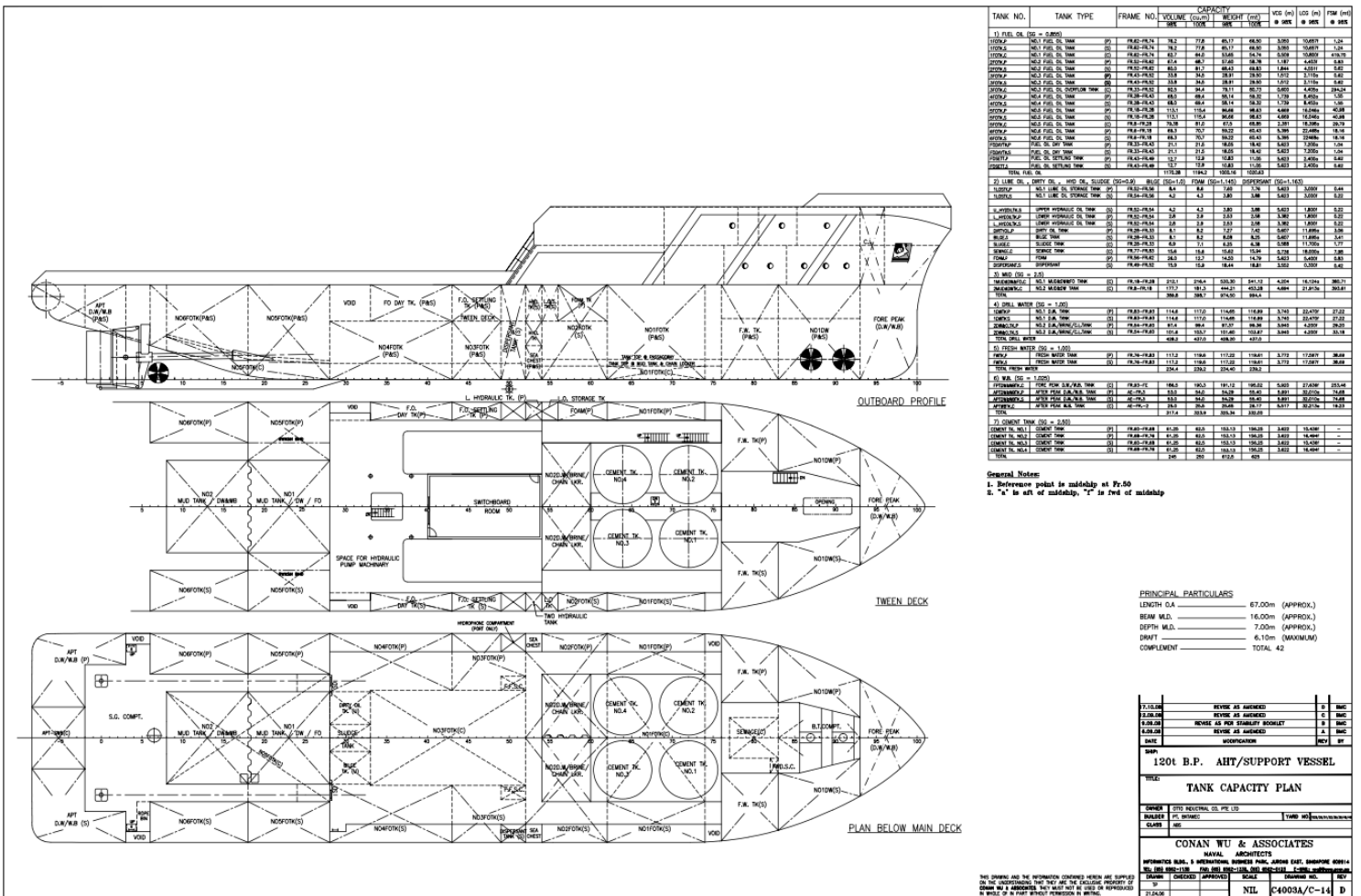
Technical parameters are subject to change without notice

TAN CANG OFFSHORE SERVICES JSC.

Contact:  
[commercial@tco.com.vn](mailto:commercial@tco.com.vn)  
[www.tancangoffshore.com](http://www.tancangoffshore.com)

# TAN CANG OFFSHORE SERVICES JSC.

## GENERAL ARRANGEMENT



Technical parameters are subject to change without notice